



KNIT | SKILL LEVEL: **INTERMEDIATE**

ABBREVIATIONS

Alt = Alternate
Approx = Approximately
Beg = Begin(ning)
Cont = Continue(ity)
K = Knit
K2tog = Knit next 2 stitches together
P = Purl
Pat = Pattern
Pss = Pass slipped stitch over

Rep = Repeat
RS = Right side
Sl1 = Slip next st knitwise
Ssk = Slip next 2 stitches knitwise one at a time. Pass them back onto left-hand needle, then knit through back loops together.
St(s) = Stitch(es)
WS = Wrong side
Yo = Yarn over

MEASUREMENTS

Approx 38" [96.5 cm] wide x 40" [101.5 cm] long.

GAUGE

8 sts and 13 rows = 4" [10 cm] in stocking stitch.

INSTRUCTIONS

Cast on 75 sts (multiple of 6 sts + 3). **Do not** join. Working back and forth across needle, knit 5 rows (garter st), noting first row is WS. Proceed in pat as follows (see chart on page 2):

1st row: (RS). K2. *yo. ssk. K1. K2tog. yo. K1. Rep from * to last st. K1.

2nd and alt rows: K1. Purl to last st. K1.

3rd and 5th rows: As 1st row.

7th row: K3. *yo. Sl1. K2tog. pss. yo. K3. Rep from * to end of row.

9th row: K2. *K2tog. yo. K1. yo. ssk. K1. Rep from * to last st. K1.

11th row: K1. K2tog. *yo. K3. yo. Sl1. K2tog. pss. Rep from * to last 6 sts. yo. K3. yo. ssk. K1.

12th row: As 2nd row.

These 12 rows form pat.

Cont in pat until work from beg measures approx 39" [99 cm], ending on 5th row of pat.

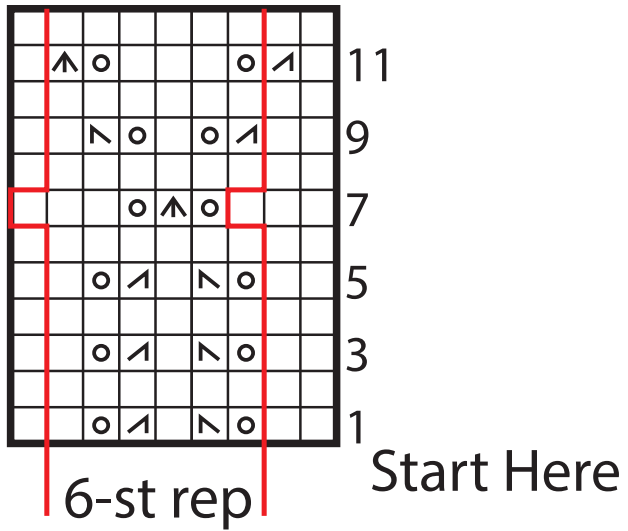
Knit 4 rows (garter st).

Cast off knitwise (WS).

MATERIALS

Bernat® Baby Blanket Dappled™ (10.5 oz/300 g; 220 yds/201 m) Skipping Stone (15001) **2 balls**

Size U.S. 11 (8 mm) circular knitting needle 36" [91.5 cm] long **or size needed to obtain gauge.**



Key

- = Knit on RS rows. Purl on WS rows.
- ◻ = Purl on RS rows. Knit on WS rows.
- ▣ = K2tog
- ▤ = sl1. K2tog. pss0.
- ▥ = ssk
- ◻ = yo

